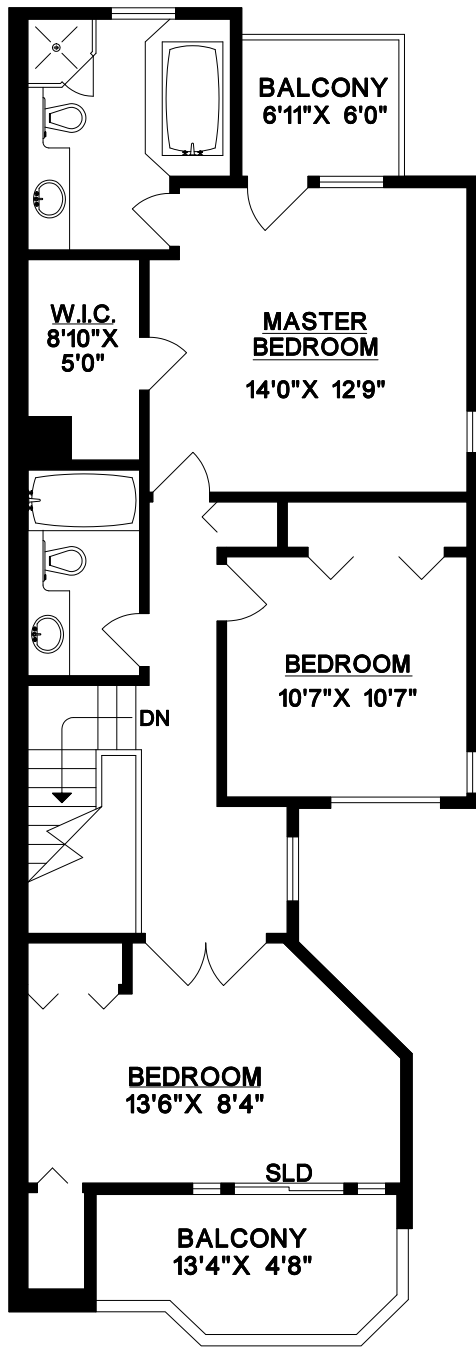
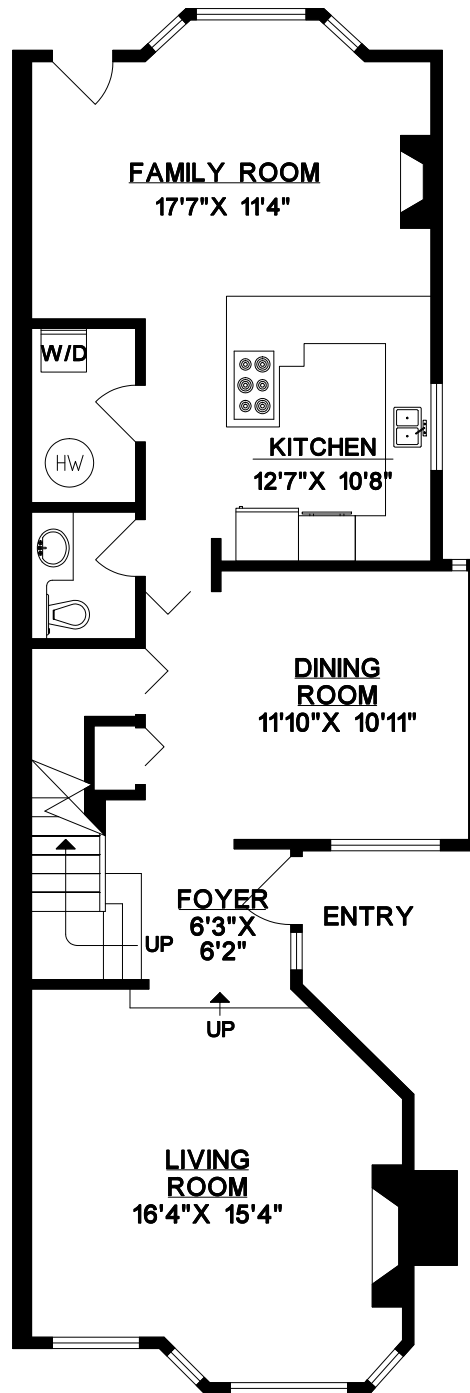


UPPER FLOOR



MAIN FLOOR



MACDONALD REALTY BGW LTD.

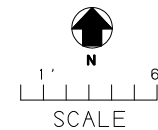
**PENNY GRAHAM
BEV WEAVER
MONIQUE BADUN
KIM CRAIG**
604-263-1911

**2235 W. 14TH AVE.,
VANCOUVER, B.C.**

UPPER FLOOR	907 SQ. FT.
MAIN FLOOR	1044 SQ. FT.
*TOTAL	1951 SQ. FT.

BALCONY 1	42 SQ. FT.
BALCONY 2	74 SQ. FT.

* Area measurements taken to exterior of exterior walls and centre of demising walls.



MEASURE MASTERS
VANUVER/THE CITIES
(604) 931-8585
DEC. 2009